

RESEARCH ARTICLE

Open Access

# The association between genetic variants in lactotransferrin and dental caries: a meta- and gene-based analysis



Xueyan Li<sup>1</sup>, Yi Su<sup>1</sup>, Di Liu<sup>2</sup> and Jingyun Yang<sup>3,4,5,6\*</sup>

## Abstract

**Background:** The pathogenesis of dental caries remains unclear, with increasing evidence suggesting that genetic susceptibility plays an essential role. Previous studies have reported the association between genetic polymorphisms in lactotransferrin (*LTF*) and the risk of dental caries with inconsistent results.

**Methods:** A systematic literature search of the PubMed, Cochrane Library, HuGE and Google Scholar databases was performed by two authors independently for papers published before December 5, 2019 on the association between genetic variants in *LTF* and the risk of dental caries. We adopted the subsequent inclusion criteria to assess study eligibility: 1) The studies were based on human subjects; 2) the presence of dental caries should be screened for in both the case group and the control group; and 3) genotype data on variants in *LTF* were available in both the case group and the control group. We calculated odds ratios (ORs) and the corresponding 95% confidence intervals (CIs) by using random-effects models to assess the association of genetic variants in *LTF* with the risk of dental caries. We also performed a gene-based analysis to explore the joint association of multiple genetic variants in *LTF* with the risk of dental caries.

**Results:** Our systematic literature search identified six relevant papers for analysis. We found no significant association between rs1126478 and the risk of dental caries when meta-analysing the genotype distribution between subjects with dental caries and those without dental caries (additive model: OR = 1.41; 95% CI = 0.98–2.02;  $P = 0.065$ ). However, further analysis indicated that rs1126478 was associated with dental risk in subjects who had moderate or severe dental caries compared to those without dental caries ( $P < 0.0001$ ). The gene-based analysis indicated that multiple genetic variants in *LTF* were jointly associated with the risk of dental caries ( $P = 0.002$ ).

**Conclusions:** The present meta-analysis revealed some evidence of the association between rs1126478 and dental caries and that multiple genetic variants in *LTF* are jointly associated with the risk of dental caries. Our findings need to be validated by larger studies that adjust for important confounding factors for the risk of dental caries.

**Keywords:** *LTF*, Dental caries, Polymorphism, Meta-analysis

\* Correspondence: [jingyuny@gmail.com](mailto:jingyuny@gmail.com)

<sup>3</sup>Division of Statistics, School of Economics, Shanghai University, 99 Shangda Rd, Baoshan Dist, Shanghai 200444, China

<sup>4</sup>Research Center of Financial Information, Shanghai University, Shanghai, China

Full list of author information is available at the end of the article



© The Author(s). 2020 **Open Access** This article is licensed under a Creative Commons Attribution 4.0 International License, which permits use, sharing, adaptation, distribution and reproduction in any medium or format, as long as you give appropriate credit to the original author(s) and the source, provide a link to the Creative Commons licence, and indicate if changes were made. The images or other third party material in this article are included in the article's Creative Commons licence, unless indicated otherwise in a credit line to the material. If material is not included in the article's Creative Commons licence and your intended use is not permitted by statutory regulation or exceeds the permitted use, you will need to obtain permission directly from the copyright holder. To view a copy of this licence, visit <http://creativecommons.org/licenses/by/4.0/>. The Creative Commons Public Domain Dedication waiver (<http://creativecommons.org/publicdomain/zero/1.0/>) applies to the data made available in this article, unless otherwise stated in a credit line to the data.

## Background

Dental caries, also known as caries or dental decay, refers to the localised destruction of dental hard tissues [1, 2]. Dental caries not only affects the appearance and function of teeth but can have downstream effects on health. Although epidemiological studies have indicated that the lifetime prevalence of dental caries has decreased over the past four decades, the decrease mainly occurred in high-income countries (HICs) [3]. Dental caries remains very common despite the adoption of various preventive measures. For example, the National Center for Health Statistics has estimated that the prevalence of total dental caries, including untreated and treated cases, was 45.8% in primary or permanent teeth among youth aged 2–19 for 2015–2016 in the United States [4].

Dental caries is a complex multi-factorial disease resulting from long-term interaction between acid-producing bacteria and multiple biological, physical and environmental risk factors, such as salivary flow, diet, oral hygiene and fluoride exposure [5, 6]. However, these variables alone cannot entirely explain the onset and development of dental caries. Increasing evidence suggests that genetic susceptibility plays an essential role in the etiological mechanisms of dental caries [7].

Saliva forms the most important external environment for dental health. It contains a variety of antibacterial proteins that can effectively inhibit the accumulation and adhesion of oral bacteria, thereby preventing the incidence of dental caries [8]. Lactotransferrin (*LTF*) is an important iron-binding glycoprotein produced by saliva, and it can affect the occurrence and development of dental caries in a variety of ways [9].

The *LTF* gene is located on chromosome 3 at position 3p21 and is organised into 17 exons, with a size between 23 and 35 kb [10]. Multiple studies have examined the association between genetic variants in *LTF* and dental caries. A polymorphism (140A/G, rs1126478), located in the second exon, is responsible for the substitution of a lysine (Lys) with an arginine (Arg) at position 29 (or 47 depending on nomenclature) in the antimicrobial region. This single nucleotide polymorphism (SNP) might influence the expression level and function of the *LTF* protein [11]. The association between the rs1126478 polymorphism and the risk of dental caries has been examined in several previous studies, with inconsistent findings [12–15]. Meanwhile, the association of other genetic variants in *LTF* has been reported in connection with the risk of dental caries [15, 16]. Therefore, we performed this meta-analysis to examine the association between rs1126478 and dental caries. We also performed a gene-based analysis to explore the joint association of multiple genetic variants in *LTF* with the risk of dental caries.

## Methods

Due to the systematic review and meta-analytic nature of this study, ethical approval and informed consent statements are not required.

### Eligibility criteria

We adopted the subsequent inclusion criteria to assess study eligibility: 1) The studies were based on human subjects; 2) the presence of dental caries should be screened for in both the case group and the control group; and 3) genotype data on variants in *LTF* were available in both the case group and the control group. When there were multiple studies using overlapping data, we chose the one that had a larger sample size.

### Search strategy

A systematic literature search of the PubMed, Cochrane Library, HuGE and Google Scholar databases was performed by two authors (XL and JY) independently for papers published before December 5, 2019. We used a combination of keywords as appropriate, including LFT, lactotransferrin, dental caries, tooth decay and cavities.

All potentially relevant publications were retrieved to assess study eligibility. The references in all identified studies were also checked for studies that might have been missed during the initial literature search. Google Scholar's 'cited by' tool was also used to search for potential eligible publications that cited the studies identified in the literature search. Literature search was performed independently by the two authors with a limitation to studies published in English. Any disagreement regarding study eligibility was resolved by group discussion (XL, YS and JY).

### Data extraction

Following a pre-specified protocol, the following data were extracted independently by two authors (DL and JY): name of the first author, year of publication, basic characteristics of the study participants, including sample size, mean age, distribution of gender, race/country of origin of the participants, screening method for dental caries, and genotype data for patients with and without dental caries or for patients with different severities of dental caries. Any discrepancies that emerged in the data extraction were resolved in group meetings. Newcastle–Ottawa Scale (NOS) was used to assess the quality of the included studies, which was done by two authors (DL and JY) independently [17].

### Data analysis

Hardy–Weinberg equilibrium (HWE) was satisfied in the control group of all the included studies. We calculated odds ratios (ORs) and the corresponding 95% confidence intervals (CIs) by using random-effects models

to assess the association between genetic variants in *LTF* with the risk of dental caries. We performed analysis by assuming different genetic models, including additive, allelic, dominant, recessive and co-dominant genetic models. We used  $I^2$  to assess between-study heterogeneity, and a funnel plot and Egger's test to assess publication bias.

### Gene-based analysis

Since it is likely that multiple genetic variants in *LTF* jointly contribute to the risk of dental caries, we performed a gene-based analysis by combining *P*-values for association of individual genetic variants in *LTF* to assess the joint association. This was done by using four *P*-value combination methods, including the Fisher's method [18], the Simes method [19], the modified inverse normal method [20] and the modified truncated product method (TPM) [21, 22]. For the modified TPM, we calculated a weighted version and a unweighted version, where the former ignores the difference in sample sizes while the latter uses the sample size for each study as the weight [21]. Detailed information of the four *P*-value combination methods were given elsewhere [22].

We ran 100,000 simulations to estimate the correlation of the *P*-values in the calculation of the *P*-value for the modified TPM.

### Sensitivity/additional analysis

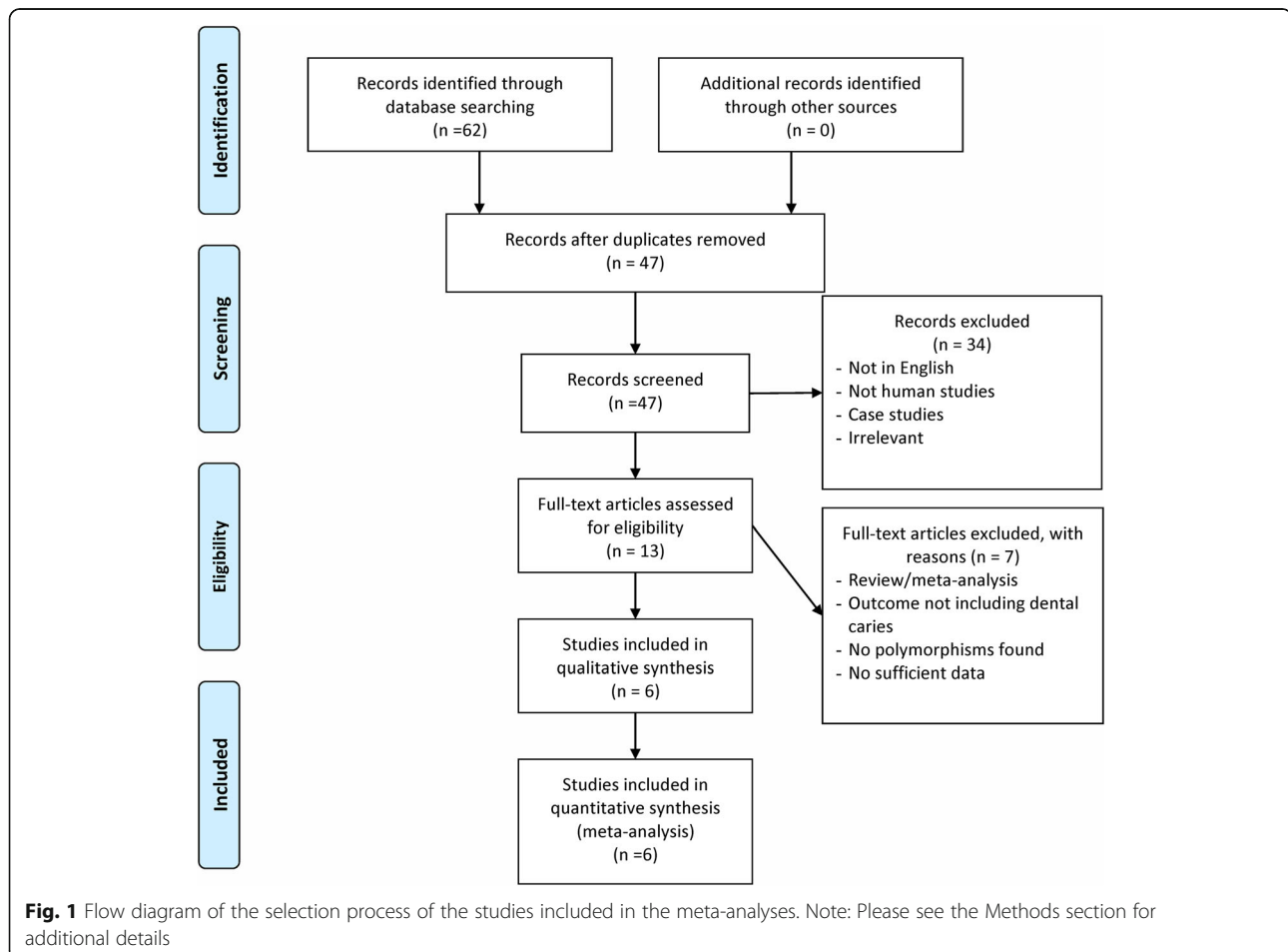
We performed sensitivity analysis by excluding low-quality studies (NOS < six stars); we also examined the association stratified by severity of dental caries using data from each individual study.

All statistical analyses were performed using R (<https://www.r-project.org/>) and MATLAB (The MathWorks, Inc., Natick, MA, USA). A *P*-value < 0.05 was considered statistically significant. This study was reported according to the PRISMA guidelines [23].

## Results

### Study selection and characteristics

The process of selection of eligible studies is shown in Fig. 1. We identified 47 potential publications through our initial search. After screening the abstracts, we excluded 34 publications because they were not in English, were not about human subjects, were case studies or were irrelevant. This left 13 studies that were retrieved



for more detailed evaluation. We excluded an additional five studies because they were reviews or meta-analyses or because the outcomes did not include dental caries. This resulted in eight potentially relevant publications. We then excluded two more studies because there was insufficient data or no polymorphisms were detected, resulting in six publications that were finally included in our analyses [12–16, 24]. It should be noted that two studies used overlapping data [16, 24], with one study covering several new genetic variants in *LTF* other than rs1126478. Therefore, in the main meta-analysis for the association of rs1126748 with dental caries, we used the study with a larger sample size [24], while the analysis for other variants used data from the other study [16]. In summary, the main meta-analyses of rs1126748 included four studies [12–14, 24] with 1066 subjects having dental caries and 736 subjects having no caries. Data for other genetic variants, including rs1126477, rs6441989, rs2073495 and rs11716497, came from individual studies [15, 16].

All included publications were published after 2010. Table 1 shows the basic characteristics of the six included studies. Most of the studies are of good quality, except one the sample size of which is very limited [13].

#### Assessment of publication Bias

For simplicity, we mainly reported results assuming an additive model for the meta-analysis of rs1126478. Analysis results obtained assuming other genetic models can be found in Table 2. There was no evidence of publication bias for the meta-analysis of the four included studies ( $P = 0.374$ ; Fig. 2) or for the meta-analyses assuming other genetic models (all  $P$ -values  $> 0.05$ ). There was no evidence of publication bias in the sensitivity analysis which excluded the study using adult data [13] ( $P = 0.402$ ).

#### Association of rs1126748 with dental caries

Assuming an additive genetic model, we found no association of rs1126748 in *LTF* with the risk of dental caries

**Table 2** Association of rs1126748 with dental caries under different genetic models

Genetic models	OR (95% CI)	<i>P</i>
<b>Additive (reference, A)</b>	1.41 (0.98–2.02)	0.065
<b>Allelic (G vs. A)</b>	1.41 (0.48–4.13)	0.386
<b>Dominant (GG + GA vs. AA)</b>	1.32 (0.43–4.03)	0.484
<b>Recessive (GG vs. GA + AA)</b>	1.55 (0.44–5.38)	0.348
<b>Co-dominant (GA vs. GG + AA)</b>	0.97 (0.72–1.32)	0.778

OR Odds ratio, CI Confidence interval

in a random-effects meta-analysis including the four studies (OR = 1.41, 95% CI: 0.98–2.02,  $P = 0.065$ ; Fig. 3). There existed high heterogeneity among the included studies ( $I^2 = 93.6%$ ,  $P < 0.0001$ ). We found no association in the meta-analysis excluding the study that used adult data [13] (OR = 1.47, 95% CI: 0.92–2.35,  $P = 0.106$ ;  $I^2 = 95.7%$ ,  $P$  for heterogeneity =  $< 0.0001$ ; online supplementary Figure 1). A meta-analysis assuming other genetic models also revealed no significant association of rs1126748 with the risk of dental caries (allelic G vs. A: OR = 1.41, 95% CI: 0.48–4.13,  $P = 0.386$ ; dominant GG + GA vs. AA: OR = 1.32, 95% CI: 0.43–4.03,  $P = 0.484$ ; recessive GG vs. GA + AA: OR = 1.55, 95% CI: 0.44–5.38,  $P = 0.348$ ; and co-dominant GA vs. AA+GG: OR = 0.97, 95% CI: 0.72–1.32,  $P = 0.778$ ; online Supplementary Figure 2).

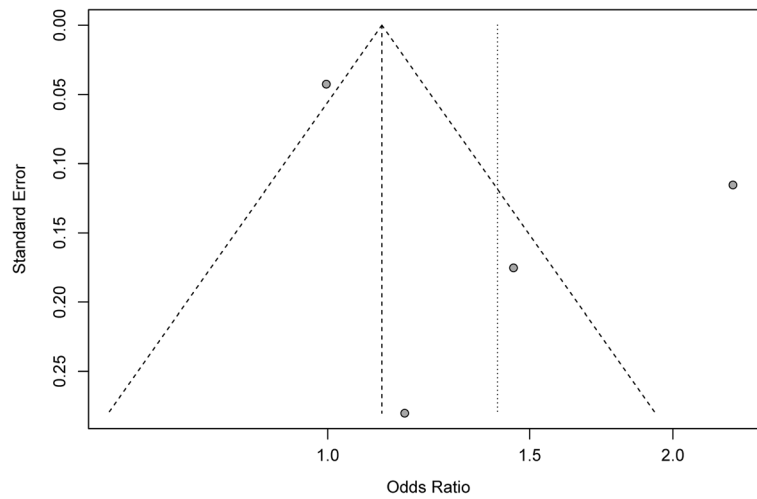
Two studies provided genotype data for patients with different severities of dental caries, and we examined the association stratified by severity of dental caries using data from each individual study. One study [14] categorised dental caries into low (decayed, missing and filled teeth index [DMFT] = 1), moderate ( $2 \leq \text{DMFT} \leq 3$ ) and high ( $\text{DMFT} \geq 4$ ) groups. Compared with the control group, we found a significant association in patients with a low level of dental caries (OR = 0.65, 95% CI: 0.47–0.90,  $P = 0.008$ ) but no significant association in patients with a moderate level of dental caries (OR = 1.04, 95% CI: 0.80–1.34,  $P = 0.792$ ) or in patients with a severe level of dental caries (OR = 1.20, 95% CI: 0.94–1.54,  $P = 0.148$ ). However, the association was significant when

**Table 1** Basic characteristics of all the studies included in the analyses

Study	Year of publication	Country/origin	Ethnicity	Dental caries			Control			Diagnosis of dental caries	NOS
				n	Age	Male (%)	n	Age	Male (%)		
Azevedo et al.	2010	Brazil	Caucasian	62	12	–	48	12	–	DMFT	7
Fine et al.	2013	US	Mixed	17	–	–	33	–	–	Radiolucency	5
Volckova et al.	2014	European countries	Caucasian	482	11–13	50.00	155	11–13	52.90	DMFT	7
Doetzer et al.	2015	Brazil	Mixed	346	12	45.3	331	12	44.1	DMFT	9
Wang et al.	2017	China	Asian	505	3.48 ± 0.58	52.70	500	3.64 ± 0.33	49.00	DMFT	8
Wang et al.	2018	China	Asian	507	3.52 ± 0.51	52.64	403	3.57 ± 0.33	48.90	DMFT	8

Data for age were presented as mean, mean ± SD or range

SD Standard deviation, NOS the Newcastle–Ottawa scale, DMFT Decayed, missing and filled teeth index



**Fig. 2** Funnel plot for meta-analysis of the association of rs1126478 with dental caries assuming an additive model. The x-axis is the odds ratio, and the y-axis is the standard error of estimated effect of rs1126478 on risk of dental caries. The vertical line in the figure represents the overall estimated odds ratio. The two diagonal lines represent the pseudo 95% confidence limits of the effect estimate

combining patients with a moderate level of dental caries and patients with a severe level of dental caries (OR = 1.88, 95% CI: 1.50–2.37,  $P < 0.0001$ ). Another study [16] provided genotype data for patients with a relatively severe level of dental caries and categorised patients into moderate ( $8 \leq DMFF \leq 12$ ) and severe ( $13 \leq DMFT \leq 20$ ) groups. Compared with the control group, we found a significant association in both patients with a moderate level of dental caries (OR = 0.72, 95% CI: 0.65–0.80,  $P < 0.0001$ ) and patients with a severe level of dental caries (OR = 0.78, 95% CI: 0.70–0.87,  $P < 0.0001$ ).

**Association of other genetic variants in LTF with dental caries**

A few studies provided genotype data for other genetic variants in *LTF*, and we examined their association with dental caries. The results are summarised in Table 3. Specifically, there was a significant association of the risk of dental caries with rs1126477 (OR = 1.17, 95% CI: 1.06–1.29,  $P = 0.002$ ) but no significant association with

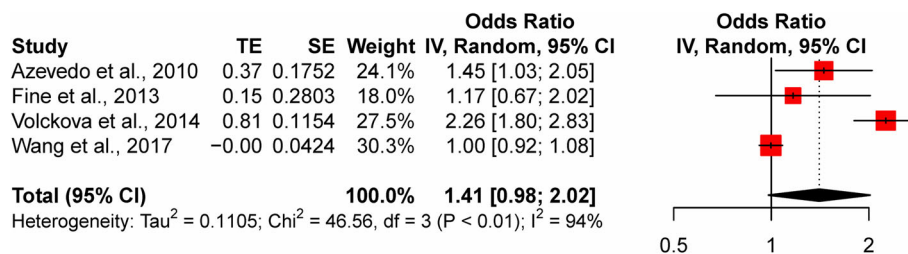
rs6441989 ( $P = 0.697$ ), rs2073495 ( $P = 0.941$ ) and rs11716497 ( $P = 0.575$ ).

**Gene-based analysis**

To assess the joint association of multiple genetic variants in *LTF* with dental caries, we used results from our meta-analysis and results for other genetic variants from single studies. All the four  $P$ -value combination methods indicated a significant joint association of genetic variants in *LTF* with the risk of dental caries (Table 4). Specifically, the unweighted TPM that took into account the correlation among the  $P$ -values indicated a joint association of 0.001, and the weighted TPM that further took into account the sample sizes of each study indicated a joint association of 0.0007.

**Discussion**

In this paper, we examined the association of multiple genetic variants in *LTF* with the risk of dental caries using meta- and gene-based analyses. We found no significant association of rs1126478 with the risk of dental



**Fig. 3** Forest plot for meta-analysis of the association of rs1126478 with dental caries. Each study is represented by a square whose area is proportional to the weight of the study. The overall effect from meta-analysis is represented by a diamond whose width represents the 95% CI for the estimated OR. OR, odds ratio; CI, confidence interval

**Table 3** Association of other genetic variants in *LTF* with dental caries

Genetic variants	Study	OR (95% CI)	P
<b>rs11216477</b>	Wang et al., 2018 [16]	1.17 (1.06–1.29)	0.002
<b>rs6441989</b>	Doetzer et al., 2015 [15]	1.02 (0.92–1.14)	0.697
<b>rs2073495</b>	Doetzer et al., 2015 [15]	0.99 (0.86–1.15)	0.941
<b>rs11716497</b>	Doetzer et al., 2015 [15]	1.04 (0.90–1.21)	0.575

*LTF* Lactoferrin, *OR* Odds ratio, *CI* Confidence interval

caries when comparing subjects with dental caries with those without dental caries. However, further analysis indicated that rs1126478 was associated with dental risk in subjects who had moderate or severe dental caries compared to those without dental caries. The gene-based analysis indicated that multiple genetic variants in *LTF* showed joint association with the risk of dental caries.

*LTF* can block the formation of biofilm by stimulating twitching, which results in bacteria wandering and prevents the formation of bacteria clusters and biofilms [25]. In addition to the antibacterial function, *LTF* is also involved in various physiological functions, such as iron absorption and modulated immune responses [9], thereby affecting the development of dental caries. The G allele of the SNP rs1126478 results from the substitution of lysine with arginine at position 29. The arginine variation of *LTF* has a weaker antibacterial effect on Gram-positive bacteria. A previous in vitro study indicated that *LTF* from whole saliva derived from recombinant human *LTF* with the lysine (K) variant of rs1126478 in *LTF* killed mutants streptococci associated with caries by more than 1 log compared to the arginine (R) variant [11]. However, the exact role of this genetic variant in the association with the risk of dental caries remains undetermined.

Of the four studies included in the meta-analysis of rs1126478, three [12–14, 24] indicated increased susceptibility of the G allele in association with the risk of dental caries, although the effect of the G allele was not significant in one study that has a very limited sample size and a wide CI of the estimated effect [13]. In contrast, the other study seems to indicate a smaller or even a reverse effect of the G allele (OR = 0.997 in the additive model) [24]. There were differences among the studies, such as age distribution and race/ethnicities of the study participants. It is unclear whether the variation of the effect of G allele does exist or whether it is affected

**Table 4** Gene-based analysis of association of genetic variants in *LTF* with the risk of dental caries

Gene	Fisher	Simes	Inverse	TPM (unweighted)	TPM (weighted)
<i>LTF</i>	0.028	0.009	0.069	0.001	0.0007

*LTF* Lactoferrin, *TPM* The modified truncated product method

by other confounding factors, which warrant further study.

We also explored the association between dental caries risk and other genetic variants in *LTF*, including rs1126477, rs6441989, rs2073495 and rs11716497. These genetic variants were less well studied compared to the other SNP, rs1126478. Our analysis indicated a significant joint association of multiple genetic variants in *LTF* with the risk of dental caries. However, caution should be exercised in interpreting these results because the effect of each genetic variant was estimated using data from single studies [15, 16], and therefore the estimates might be subject to bias. Another study searched for genetic variations in the promoter region of *LTF* but failed to identify any polymorphisms [26]. Future studies that target more genetic variants in *LTF* are greatly needed to examine whether the risk of dental caries is also affected by other genetic variants in *LTF*.

Our study has some limitations. First, the number of studies for the meta-analysis of rs1126478 is limited, despite the systematic literature search. Our findings need to be validated by future studies that have larger sample sizes. Second, we observed significant heterogeneity among the included studies. The participants in the included studies were of different ethnic backgrounds. This might partly explain the different genetic structures of the included participants. For example, three of the four studies in the meta-analysis showed G was the minor allele of rs1126478 in the control group having a minor allele frequency ranging from 0.26–0.39 [12–14], while a study of Chinese children [24] indicated that G was the major allele in the control group having a frequency of 0.66. The sample sizes in some studies were very limited [12, 13]. All these factors could contribute to the observed heterogeneity of the studies. However, due to the limited availability of data from each individual study, we could not track the exact source of the heterogeneity. Meta-regression is also not feasible and/or meaningful, again due to the limited number of studies [27] and the availability of relevant data from the included studies. Finally, we could not control for important factors that may affect the risk of dental caries due to a lack of data for individual subjects. The estimated effect of genetic variants in *LTF* on dental caries risk might be biased due to confounding, thereby influencing the validity of any meta-analysis that used unadjusted results. Therefore, such confounding factors should be taken into account in future studies to more accurately disentangle the exact relationship between *LTF* and the risk of dental caries.

## Conclusions

In summary, the present meta-analysis revealed no significant association of the genetic variant rs1126478 in

*LTF* with the risk of dental caries. However, the relationship might vary depending on the severities of dental risk. Moreover, multiple genetic variants in *LTF* showed a joint association with the risk of dental caries. Our findings need to be validated by larger studies that take into account important confounding factors for the risk of dental caries. Prospective studies that adjust for other important relevant factors, such as diet and microbial and host characteristics, are also useful to elucidate the relationship between genetic variants in *LTF* and dental caries.

## Supplementary information

**Supplementary information** accompanies this paper at <https://doi.org/10.1186/s12881-020-01029-7>.

**Additional file 1: Figure S1.** Forest plot for meta-analysis of the association of rs1126478 with dental caries with adult data excluded. Each study is represented by a square whose area is proportional to the weight of the study. The overall effect from meta-analysis is represented by a diamond whose width represents the 95% CI for the estimated OR. OR, odds ratio; CI, confidence interval.

**Additional file 2: Figure S2.** Forest plot for meta-analysis of the association of rs1126478 with dental caries using other genetic models. A) Allelic model; B) Dominant model; C) Recessive model and D) Co-dominant model. Each study is represented by a square whose area is proportional to the weight of the study. The overall effect from meta-analysis is represented by a diamond whose width represents the 95% CI for the estimated OR. OR, odds ratio; CI, confidence interval.

## Abbreviations

LTF: Lactotransferrin; HIC: High income countries; CI: Confidence interval; OR: Odds ratio; NOS: Newcastle–Ottawa scale; HWE: Hardy–Weinberg equilibrium; DMFT: Decayed, missing and filled teeth index; TPM: Truncated product method

## Acknowledgements

We would like to thank the participants in the included studies for their contributions.

## Authors' contributions

JY is the guarantor. XL, YS, DL and JY drafted the manuscript. XL and YS contributed to the development of the selection criteria, the risk of bias assessment strategy and data extraction criteria. XL and JY developed the search strategy. DL and JY provided statistical expertise. XL and YS provided expertise on dental caries. All authors read, provided feedback and approved the final manuscript.

## Funding

This study was supported by the National Natural Science Foundation of China (Grant No. 81771493). Dr. Jingyun Yang's research was also supported by NIH/NIA grant R01AG036042 and the Illinois Department of Public Health. The funders had no role in study design, data collection and analysis, decision to publish or preparation of the manuscript.

## Availability of data and materials

All data generated or analysed during this study are included in this published article and its supplementary information files.

## Ethics approval and consent to participate

Not applicable.

## Consent for publication

Not Applicable.

## Competing interests

The authors declare that they have no conflicts of interests.

## Author details

<sup>1</sup>Department of Stomatology, Eye & Ent Hospital of Fudan University, Shanghai, China. <sup>2</sup>Beijing Key Laboratory of Clinical Epidemiology, School of Public Health, Capital Medical University, Beijing, China. <sup>3</sup>Division of Statistics, School of Economics, Shanghai University, 99 Shangda Rd, Baoshan Dist, Shanghai 200444, China. <sup>4</sup>Research Center of Financial Information, Shanghai University, Shanghai, China. <sup>5</sup>Rush Alzheimer's Disease Center, Rush University Medical Center, Chicago, IL, USA. <sup>6</sup>Department of Neurological Sciences, Rush University Medical Center, Chicago, IL, USA.

Received: 16 February 2020 Accepted: 20 April 2020

Published online: 27 May 2020

## References

- Nyvad B, Kidd E, Fejerskov O. Dental caries: the disease and its clinical management. Hoboken: Wiley; 2015.
- Selwitz RH, Ismail AI, Pitts NB. Dental caries. *Lancet*. 2007;369(9555):51–9.
- Frencken JE, Sharma P, Stenhouse L, Green D, Lavery D, Dietrich T. Global epidemiology of dental caries and severe periodontitis - a comprehensive review. *J Clin Periodontol*. 2017;44(Suppl 18):S94–S105.
- Fleming E, Afful J. Prevalence of total and untreated dental caries among youth: United States, 2015–2016. In: NCHS Data Brief, vol. 307. Hyattsville: National Center for Health Statistics; 2018.
- Harris R, Nicoll AD, Adair PM, Pine CM. Risk factors for dental caries in young children: a systematic review of the literature. *Community Dent Health*. 2004;21(1 Suppl):71–85.
- Stokey GK. The effect of saliva on dental caries. *J Am Dent Assoc*. 2008; 139:115–75.
- Piekoszewska-Zietek P, Turska-Szybka A, Olczak-Kowalczyk D. Single nucleotide polymorphism in the Aetiology of caries: systematic literature review. *Caries Res*. 2017;51(4):425–35.
- Pepperney A, Chikindas ML. Antibacterial peptides: opportunities for the prevention and treatment of dental caries. *Probiotics Antimicrob Proteins*. 2011;3(2):68.
- Hao L, Shan Q, Wei J, Ma F, Sun P. Lactoferrin: major physiological functions and applications. *Curr Protein Pept Sci*. 2019;20(2):139–44.
- Kim SJ, Yu DY, Pak KW, Jeong S, Kim SW, Lee KK. Structure of the human lactoferrin gene and its chromosomal localization. *Mol Cell*. 1998;8(6):663–8.
- Vellygounder K, Kaplan JB, Furgang D, Legarda D, Diamond G, Parkin RE, Fine DH. One of two human lactoferrin variants exhibits increased antibacterial and transcriptional activation activities and is associated with localized juvenile periodontitis. *Infect Immun*. 2003;71(11):6141–7.
- Azevedo LF, Pecharki GD, Brancher JA, Cordeiro CA Jr, Medeiros KG, Antunes AA, Arruda ES, Werneck RI, de Azevedo LR, Mazur RF, et al. Analysis of the association between lactotransferrin (LTF) gene polymorphism and dental caries. *J Appl Oral Sci*. 2010;18(2):166–70.
- Fine DH, Toruner GA, Vellygounder K, Sampathkumar V, Godbole D, Furgang D. A lactotransferrin single nucleotide polymorphism demonstrates biological activity that can reduce susceptibility to caries. *Infect Immun*. 2013;81(5):1596–605.
- Volckova M, Linhartova PB, Trefna T, Vlazny J, Musilova K, Kukletova M, Kukla L, Holla LI. Lack of association between lactotransferrin polymorphism and dental caries. *Caries Res*. 2014;48(1):39–44.
- Doetzer AD, Brancher JA, Pecharki GD, Schlipf N, Werneck R, Mira MT, Riess O, Bauer P, Trevilatto PC. Lactotransferrin gene polymorphism associated with caries experience. *Caries Res*. 2015;49(4):370–7.
- Wang M, Qin M. Lack of association between LTF gene polymorphisms and different caries status in primary dentition. *Oral Dis*. 2018;24(8):1545–53.
- The Newcastle-Ottawa Scale (NOS) for assessing the quality of nonrandomised studies in meta-analyses [[http://www.ohri.ca/programs/clinical\\_epidemiology/oxford.asp](http://www.ohri.ca/programs/clinical_epidemiology/oxford.asp)].
- Fisher RA. *Statistical methods for research workers*. 5th ed. Edinburgh: Oliver and Boyd; 1932.
- Simes RJ. An improved Bonferroni procedure for multiple tests of significance. *Biometrika*. 1986;73(3):751–4.
- Hartung J. A note on combining dependent tests of significance. *Biom J*. 1999;41(7):849–55.

21. Zaykin DV, Zhivotovsky LA, Westfall PH, Weir BS. Truncated product method for combining P-values. *Genet Epidemiol.* 2002;22(2):170–85.
22. Sheng X, Yang J. Truncated product methods for panel unit root tests. *Oxf Bull Econ Stat.* 2012;75(4): 624–36.
23. Moher D, Liberati A, Tetzlaff J, Altman DG, Group P. Preferred reporting items for systematic reviews and meta-analyses: the PRISMA statement. *PLoS Med.* 2009;6(7):e1000097.
24. Wang M, Qin M, Xia B. The association of Enamelin, Lactoferrin, and tumour necrosis factor alpha gene polymorphisms with high caries susceptibility in Chinese children under 4 years old. *Arch Oral Biol.* 2017;80:75–81.
25. Singh PK, Parsek MR, Greenberg EP, Welsh MJ. A component of innate immunity prevents bacterial biofilm development. *Nature.* 2002;417(6888): 552–5.
26. Brancher JA, Pecharki GD, Doetzer AD, Medeiros KG, Cordeiro Junior CA, Sotomaior VS, Bauer P, Trevilatto PC. Analysis of polymorphisms in the lactotransferrin gene promoter and dental caries. *Int J Dent.* 2011;2011: 571726.
27. Borenstein M, Hedges LV, Higgins JPT, Rothstein HR. *Introduction to Meta-Analysis.* Hoboken: Wiley; 2011.

### Publisher's Note

Springer Nature remains neutral with regard to jurisdictional claims in published maps and institutional affiliations.

**Ready to submit your research? Choose BMC and benefit from:**

- fast, convenient online submission
- thorough peer review by experienced researchers in your field
- rapid publication on acceptance
- support for research data, including large and complex data types
- gold Open Access which fosters wider collaboration and increased citations
- maximum visibility for your research: over 100M website views per year

**At BMC, research is always in progress.**

Learn more [biomedcentral.com/submissions](https://biomedcentral.com/submissions)

