

RESEARCH ARTICLE

Open Access

Clinical and GAA gene mutation analysis in mainland Chinese patients with late-onset Pompe disease: identifying c.2238G > C as the most common mutation

Xiao Liu^{1†}, Zhaoxia Wang^{1†}, Weina Jin¹, He Lv¹, Wei Zhang¹, Chengli Que², Yu Huang³ and Yun Yuan^{1*}

Abstract

Background: Pompe disease is an autosomal recessive lysosomal glycogen storage disorder that has been reported in different ethnic populations which carry different common mutations of the acid alpha-glucosidase (GAA) gene. The GAA mutation pattern in mainland Chinese patients with late-onset Pompe disease is still not well understood.

Methods: We presented the clinical and genetic characteristics of 27 mainland Chinese late-onset Pompe patients from 24 families.

Results: GAA mutation analysis revealed 26 different mutations, including 10 that were novel. The allelic frequency of c.2238G > C (p.W746C) was found to be 27.08% in this patient group. Respiratory dysfunction was diagnosed in 10 of 11 patients who underwent pulmonary function evaluation, although only four required ventilator support at night.

Conclusions: Our findings indicate that c.2238G > C (p.W746C) is the most common mutation in mainland Chinese late-onset Pompe patients, as observed in Taiwanese patients. The novel mutations identified in this study expand the genetic spectrum of late-onset Pompe disease, and the prevalence of respiratory dysfunction highlights the importance of monitoring pulmonary function in late-onset Pompe patients.

Background

Pompe disease (glycogen storage disease type II, acid maltase deficiency, OMIM #232300) is an autosomal recessive lysosomal glycogen storage disorder caused by a deficiency of the lysosomal enzyme acid α -glucosidase (GAA). Pompe disease occurs in approximately 1 per 40,000 births [1], and patients are typically classified as early (infantile) or late-onset (childhood/juvenile/adult) according to the age of symptom onset. Patients with classical infantile-onset Pompe disease display a combination of generalized skeletal muscle weakness and cardiac hypertrophy that provoke cardiorespiratory failure and death within the first year of life [2]. Conversely, the

late-onset form of Pompe disease exhibits a less severe phenotype with progressive proximal skeletal muscle weakness and respiratory muscle involvement. These nonspecific symptoms often make Pompe disease clinically difficult to differentiate from other neuromuscular diseases, but valuable evidence can be provided by measurement of decreased GAA activity, observations of vacuoles in muscle fibers on muscle biopsy, and genetic tests of the GAA gene [3,4].

This gene has been mapped to chromosome 17q25.2–q25.3; it contains 20 exons and the first amino acid is encoded by exon 2. Pathogenic sequence variations in GAA can lead to complete or partial loss of lysosomal GAA activity, and a close correlation exists between the functional GAA protein and clinical phenotype: the less residual GAA activity, the earlier the onset and greater the severity of the disease [5,6]. To date, over 400 different mutations have been described [see [* Correspondence: \[yuanyun2002@sohu.com\]\(mailto:yuanyun2002@sohu.com\)](http://www.</p></div><div data-bbox=)

[†]Equal contributors

¹Department of Neurology, Peking University First Hospital, Beijing 100034, China

Full list of author information is available at the end of the article

pompecenter.nl]. Some mutations appear with considerable frequency in distinct ethnic groups. For example, c.-32-13 T > G is the most common mutation in Caucasian patients with a frequency as high as 34–47% [4,7-11]. Conversely, c.1935C > A (p.D645E) and c.2238G > C (p.W746C) are common in Taiwanese patients [12]. Awareness of Pompe disease has been increasing in recent years, and more cases have been reported worldwide [13-15]. However, limited data have been published about mainland Chinese late-onset Pompe patients [16-18]. We herein present the clinical features and *GAA* mutation pattern of 27 patients from 24 unrelated families with late-onset Pompe disease from mainland China.

Methods

Subjects

Twenty-seven patients from 24 unrelated families (Table 1) who were diagnosed with Pompe disease at the Department of Neurology, Peking University First Hospital (Peking, China) from 2003 to 2013, were recruited in this study. None of the patients had consanguineous parents. Their confirmatory diagnosis was based on clinical features, biochemical assay, muscle pathology, and molecular tests. All patients gave their informed consent for this study, and ethical approval for the study was obtained from the health authority ethical committee of Peking University First Hospital.

Clinical data included disease history and physical examination. Eleven patients with the late-onset form of Pompe disease underwent a respiratory function evaluation, including measurement of forced vital capacity (FVC) in a sitting and supine position, forced expiratory volume in one second (FEV1), maximal inspiratory pressure (MIP), maximal expiratory pressure (MEP), and cough peak flow (CPF).

Muscle pathology

Muscle biopsies were carried out in 19 patients. Muscle specimens were snap frozen in cooled isopentane, and then stored at -80°C until required for analysis. Cryostat sections were prepared and stained according to standard procedures with hematoxylin eosin, modified Gomori trichrome, periodic acid-Schiff (PAS), oil red O, adenosine triphosphatase, nicotinamide adenine dinucleotide-tetrazolium reductase (NADH-TR), succinate dehydrogenase, cytochrome c oxidase (COX), and non-specific esterase.

Biochemical assays

In 15 of the 27 patients, *GAA* enzyme activity in dried blood spots (DBS) was determined with 4-methylumbelliferyl- α -D-glucoside (4-MUG) as the substrate and acarbose as an inhibitor of maltose glucoamylase (MGA) using a fluorometric assay as described [19].

GAA mutation analysis

GAA mutation screening was performed in all patients. Genomic DNA was extracted from peripheral blood or frozen muscle biopsy specimens using standard procedures. All *GAA* exons and intron/exon boundaries were amplified by PCR, and then PCR products were purified and sequenced using an ABI 3730XL automatic sequencing machine (Applied Biosystems, Life Technologies, Carlsbad, CA, USA). Sequences were compared with the *GAA* reference DNA sequence (GenBank Accession: NM_000152) to identify pathogenic mutations. The cDNA was numbered with +1 corresponding to the A of the ATG translation initiation codon and with codon 1 as the initiation codon. The pathogenic nature of novel missense mutations was verified by direct sequencing of 100 unrelated healthy individuals. Additionally, *GAA* mutation analysis was performed in the parents of seven Pompe patients after obtaining their informed consent. To determine the effect of a possible splice-site mutation (c.1551 + 3_c.1551 + 6delAAGT) in intron 9, we extracted Total RNA from Patient 20's muscle samples, and amplified the whole cDNA by reverse transcriptase-polymerase chain reaction (RT-PCR) using the SuperScript III First-Strand DNA Synthesis kit (Invitrogen, Carlsbad, CA, USA). A region encompassing exons 9–10 was amplified using primers G9-10 F: 5'-CGTTCAACAAGGATGGCTTC-3' and G9-10R: 5'-GTGGGTTCTCCAGCTCATTG-3'. PCR products were analyzed by agarose electrophoresis.

Results

Clinical manifestations of patients

The clinical features of the 27 patients (9 male, 18 female) are summarized in Table 1. Patients 23 and 24 are a sibling pair, and patients 25, 26, and 27 are also siblings.

In present study, the patients' age at onset ranged from 1.2–32 years with a median age of 21 years. Twenty-one (77.8%) complained of muscle weakness as their initial and main symptom. All patients had skeletal muscle weakness predominantly affecting the proximal extremities. Four patients reported that respiratory insufficiency was the initial clinical symptom that prompted them to seek medical help. Two patients presented with hyperCKemia as their initial symptoms. The median age at diagnosis was 22 years (range, 3–35 years). Eighteen patients had their diagnosis confirmed initially by muscle pathology, followed by mutation detection and/or *GAA* activity assay. Six patients were diagnosed by a combination of *GAA* activity assay and genetic analysis, and three patients by genetic analysis alone.

With disease progression, 15 late-onset patients suffered respiratory dysfunction, and persistent or intermittent assisted respiration was required in 10 of these (Table 1). The median serum creatine kinase (CK) level was 700 IU/L (range, 79.0–2,391.6 IU/L). The echocardiography

Table 1 Clinical, enzymatic, and molecular information of 27 Chinese patients with late-onset Pompe disease

No.	Gender/ Age	Age of onset(years)	Age of diagnosis (years)	Initial symptoms	Family history	CK (IU/L)	Muscle pathology	lymphocyteGAA activity (pmol/ punch/hr) ¹	GAA gene mutation		Requirement of ventilator support
									Allele1	Allele2	
1	F/3	1.2	3	Muscle weakness	No	568	Vacuolar myopathy	ND	c.503G > A	c.2237G > A	Yes
2	F/3.5	2	3.5	Muscle weakness and adynamia in swallowing	No	700	Vacuolar myopathy	ND	c.503G > C	c.1082C > T	No
3	M/14	8	14	Muscle weakness	No	907	Vacuolar myopathy	ND	c.796C > T	c.1309C > T	No
4	F/22	5	22	Muscle weakness	No	1101	Vacuolar myopathy	ND	c.1562A > T	c.1781G > A	No
5	M/30	10	30	Muscle weakness	No	642	Vacuolar myopathy	ND	c.503G > A	c.2237G > A	No
6	F/23	21	21	Limb girdle weakness	No	1047	ND	0	c.1355delC	c.2238G > C	Yes
7	M/17	17	17	Muscle weakness	No	1413	ND	ND	c.2238G > C	c.2238G > C	No
8	M/12	12	12	Muscle weakness	No	1365	Vacuolar myopathy	3.15	c.871C > T	c.2238G > C	No
9	M/23	21	21	Limb girdle weakness	No	2391.6	ND	2.25	c.323G > A	c.2014C > T	No
10	M/14	6	13	Respiratory insufficiency	No	637	Vacuolar myopathy	3.96	c.1935C > A	c.2238G > C	No
11	F/17	3	4	High level of serum CK	No	1227	Vacuolar myopathy	0.25	c.2238G > C	c.2662G > T	No
12	F/15	10	13	Limb girdle weakness	No	ND	Vacuolar Myopathy	4.04	c.2238G > C		No
13	F/24	12	20	Muscle weakness	No	1200	Vacuolar myopathy	1.15	c.1561G > A	c.2161G > T	Yes
14	F/25	15	23	Muscle weakness	No	662.6	Vacuolar myopathy	ND	c.1315_1317delATG	c.2238G > C	Yes
15	F/35	29	35	Muscle weakness	No	406	Vacuolar myopathy	3.54	c.1082C > T		No
16	F/33	32	32	High level of serum CK	No	927	Vacuolar myopathy	3.32	c.-32-13 T > G	c.2662G > T	No
17	M/32	28	32	Muscle weakness	No	117	Vacuolar myopathy	8.05	c.1634C > T	c.2662G > T	No
18	F/35	25	25	Sleep disordered breathing	No	79	Vacuolar myopathy	ND	c.2238G > C	c.2431delC	Yes
19	M/20	19	20	Limb girdle weakness	No	800	Vacuolar myopathy	3.46	c.1634C > T	c.1993G > A	Yes
20	F/23	23	23	Respiratory insufficiency	No	345	Vacuolar myopathy	5.98	c.1551 + 3_c.1551 + 6delAAGT	c.2238G > C	Yes

Table 1 Clinical, enzymatic, and molecular information of 27 Chinese patients with late-onset Pompe disease (Continued)

21	F/32	23	30	Muscle weakness	No	139	Vacuolar myopathy	1.1	c.1935C > A	c.2238G > C	Yes
22	F/14	9	14	Limb girdle weakness	No	970	Vacuolar myopathy	ND	c.2446G > A	c.2662G > T	No
23 ²	F/30	24	30	Muscle weakness	Yes	563	ND	ND	c.1396delG	c.2238G > C	No
24 ²	F/28	23	28	Muscle weakness	Yes	746	ND	ND	c.1396delG	c.2238G > C	No
25 ³	M/24	16	22	respiratory insufficiency and fatigue	Yes	790	ND	0	c.241C > T	c.2238G > C	Yes
26 ³	F/31	12	28	Muscle weakness	Yes	ND	ND	0.6	c.241C > T	c.2238G > C	No
27 ³	F/29	27	27	Limb girdle and muscle weakness	Yes	303	ND	0.44	c.241C > T	c.2238G > C	Yes

¹ The median activities of 19 normal controls and 14 carriers were 36.37(range, 15.16–297.86) and 24.77 (range, 11.84–43.97) pmol/punch/hour, respectively.

² patient 23 and 24 are siblings; ³ patient 25, 26, 27 are siblings.

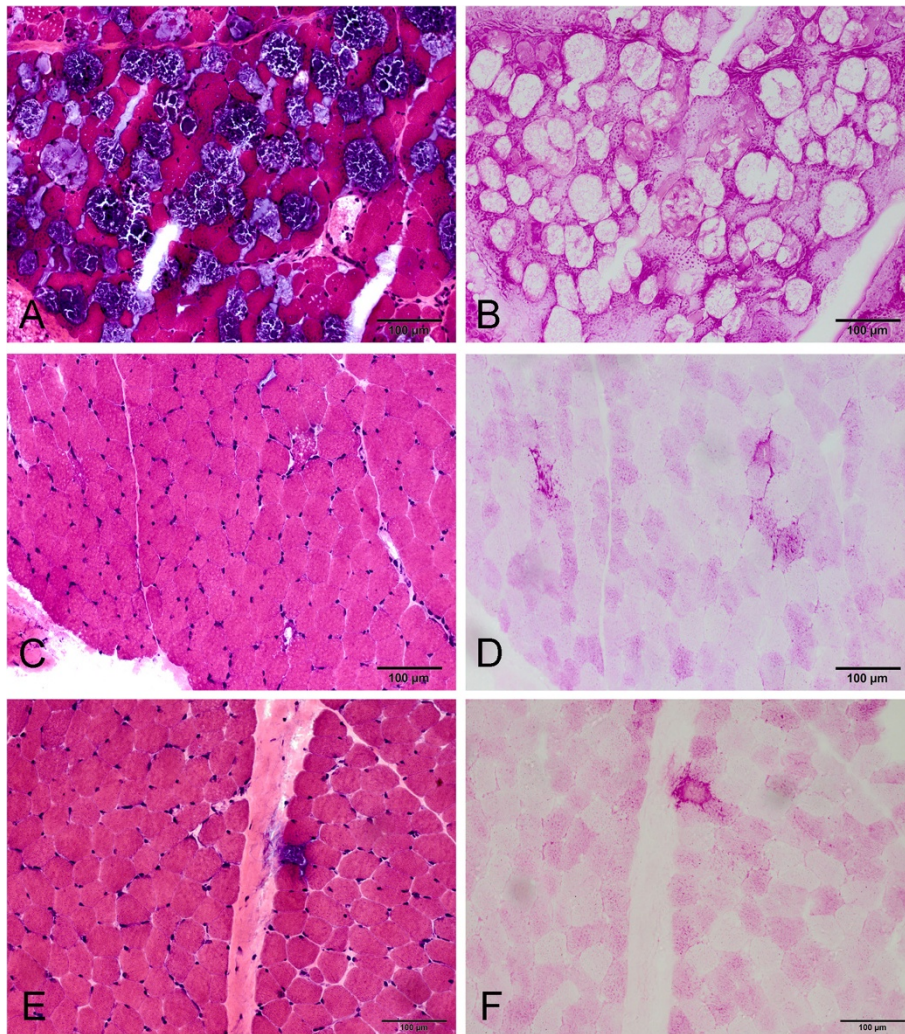


Figure 1 Myopathological changes in Patient 2 (A and B), Patient 12 (C and D) and Patient 22 (E and F). H&E staining shows extensive vacuolation in many fibers in Patient 2 (A), but only a few vacuolar fibers in Patient 12 (C) and Patient 22 (E). Vacuolar fibers stained positive for glycogen with PAS (B, D and F).

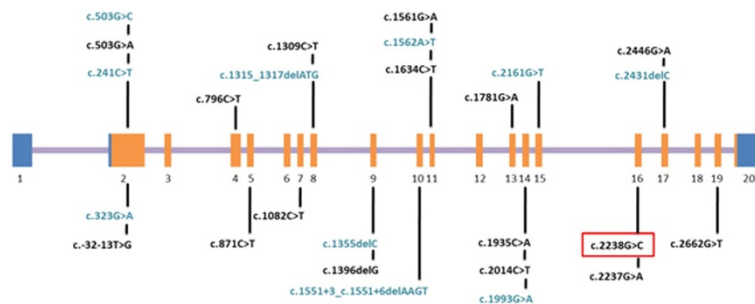


Figure 2 GAA mutation spectrum in 27 Chinese late-onset Pompe patients. All described mutations are shown above (blue, UTR; purple, introns; orange, exons).

N. crassa	48	FTFPASADIGFWLFPN	VYGNIDIEHKLTIIEFQ	GIWIDMEVASFCIGS	CSRWMQISAFPPFYRNHN	740
S. pombe	57	LTTPIVPTNVAQEPT	AYGTDVYLLNVSVD	GLCLDMCEPTSFCIGS	CARWMAGAFLPFYRNHN	737
S. pombe	39	----TIPTNIPQRLS	AYGTDVPLFLNVTYE	GIWIDMEPSSFCVGS	CSRWMAGAFSPFYRNHN	712
S. pombe	51	FSTPAVPSLILQNPSS	AYGTDVYFLALNVSFD	GLWIDMEPTSFCIGS	CSRWMAGAFLPFYRNHN	734
O. sativa	34	VFAAAPPKVSGYKLV	TYGPDILPLRLVYVHE	GLWIDMEASNFCTGK	CNRWIEGAFYPPSRDHA	640
A. thaliana	27	SYKT----IGKGYRLV	IYGSDITTLRFVYHE	GLWIDMEASNFCSGL	CNRWIEGAFYPPSRDHA	628
A. thaliana	20	CSNA----IGKGYRLI	IYGSDITTLRFVYHE	GLWIDMEASNFCSGL	CNRWIEGAFYPPSRDHA	580
D. rerio	45	LSRAECESRYCYLFP	YLPRDIHTIQLDVMAE	GLWIDMEPSNFVQG	CVRWTQGFYPPMRNHN	627
G. gallus		-----	-----	GMWIDMEPSNFVEG	CVRWTQGFYPPMRNHN	506
M. musculus	98	ISQEQCEARCYVPA	FFPKDVLTLQLEVLME	GMWIDMEPSNFVRG	CVRWTQGFYPPMRNHN	681
R. norvegicus	98	ITQEQCEARCYVPA	FFPKDVLTLQLEVLME	GMWIDMEPSNFVRG	CVRWTQGFYPPMRNHN	681
M. mulatta	98	ITQEQCEARCYVPA	FFPKDILTLRLDVME	GMWIDMEPSNFVRG	CVRWTQGFYPPMRNHN	681
H. sapiens	98	ITQEQCEARCYVPA	FFPKDILTLRLDVME	GMWIDMEPSNFVRG	CVRWTQGFYPPMRNHN	681
P. troglodytes	98	ITQEQCEARCYVPA	FFPKDILTLRLDVME	GMWIDMEPSNFVRG	CVRWTQGFYPPMRNHN	681
B. taurus	86	ITPQQCEARCYMPA	FFPKDILTLRLDMLME	GMWIDMEPSNFVRG	CVRWTQGFYPPMRNHN	668
C. lupus	98	ITQQQCEARCYRPA	FFPKDILTLRLDVLLE	GMWIDMEPSNFVRG	CVRWTQGFYPPMRNHN	681

Figure 4 Conservation of four novel missense mutations in different species.

and p.Arg168Pro (c.503G > C), however, were less conserved, indicating that the mutations are more likely to be mild in severity. The healthy parents of patients 11 (c.323G > A; c.2014C > T) and 21 (c.1634C > T; c.1993G > A) were found to carry one heterozygous mutation each that were present in their offspring.

Discussion

Although Pompe disease is rare, it has been reported in a number of different ethnic populations, such as Caucasian, Taiwanese, Korean and Japanese [4,7-12,20-23]. This study is the largest series of mainland Chinese late-onset Pompe patients, including 27 patients from 24 unrelated families. Our results showed that the majority of our patients (15/27, 55.56%) carried the c.2238G > C mutation of *GAA*, and that the allele frequency of c.2238G > C was as high as 27.08%, making it the most common mutation in this group. This result is consistent with findings in Taiwanese Pompe patients [12], but different from the common mutation (c.1935C > A) in mainland Chinese infantile-onset group [24]. Meanwhile, c.-32-13 T > G, the most common mutation of Caucasian origin with a frequency of 34–79% [3,4,7-10], was found in only one patient with compound heterozygous mutations in the present study. Other common mutations reported in certain populations, such as c.1316 T > A and c.1857C > G with a frequency of 36.6% in Korean patients [20], c.1064 T > C which is the predominant mutation in Portuguese patients [21], c.1726G > A with a frequency of up to 27.59% in Japanese patients [22], and the African-American mutation c.2560 C > T [23], were not detected in our patients. Our study therefore further supports the findings that different populations have different mutation hotspots.

As c.1935C > A, the other common mutation in Taiwan, was detected in only one patient from our group, and additionally, c.1726 G > A and c.2065G > A pseudodeficiency mutations which are common in Taiwanese, were absent in the present study, this suggests that the spectrum of *GAA* mutation differs not only between ethnicities but also from region to region in the same population. The

absence of c.[2238G > C; 1726G > A] haplotype in our patients raises the possibility that the c.2238G > C mutation might have a different ancestor in Taiwan and mainland China. Further research involving more patients is needed to confirm this.

The diagnosis of this patients group with late-onset Pompe disease depended on the combination of clinical manifestations, muscle biopsy, blood-based GAA activity assay and *GAA* gene analysis. The mean age of onset the patients in the current study was 17.41 ± 8.99 years, which is younger than a previous investigation of a Caucasian background, and is in keeping with the study in Taiwanese Pompe patients [3,10]. The difference in onset age between Chinese and Caucasian patients with Pompe disease may be caused by the prevalence of the c.2238 G > C mutation and the low frequency of c.-32-13 T > G in the present set of patients, as different mutations have different effects on enzyme activity [12]. Muscular weakness was the most common initial symptom in our study, as seen in an earlier work; [25] however, it is noteworthy that respiratory impairment was very common in our late-onset patients, which is in contrast to the study in Germany in which no patients had respiratory symptoms [25].

Dyspnea without limb weakness was the first reported symptom in four of the current patients, while 10/27 (37.0%) of late-onset patients needed mechanical ventilation within 2.5 years of disease onset. Moreover, in the seven patients without mechanical ventilation, pulmonary function evaluation revealed decreased pulmonary function in six. Together, our data support previous findings that monitoring pulmonary function is essential in late-onset Pompe disease to evaluate the need for mechanical ventilation [1,26,27].

Notably, in 18 of 27 late-onset patients, diagnosis of Pompe disease was confirmed initially by muscle pathology. Although a blood-based assay has been widely recommended as a simple diagnostic method, we still consider muscle biopsy to be a very useful tool as the diagnosis of Pompe disease can be challenging because of its heterogeneous clinical presentation and considerable overlap of

signs and symptoms found in other neuromuscular diseases [28,29]. This is particularly important in east Asia, where the high frequency of the p.[G576S;E689K] pseudo-deficiency mutation in these ethnic populations can give false positive results of GAA activity. Moreover, it is not uncommon that only one pathogenic heterozygous mutation is detected in coding region of GAA gene in Pompe patients, as in patient 12, 15, and 22 of this group. In such cases, muscle pathology can provide solid evidence for disease diagnosis (Figure 1, Table 1). However, it should be mentioned that the muscle biopsy still has its limitation in diagnosing Pompe disease due to the heterogeneity of muscle involvement, especially in patients with late onset Pompe disease [30].

Conclusions

Our findings indicate that c.2238G > C (p.W746C) is the most common mutation in mainland Chinese late-onset Pompe patients, as observed in Taiwanese patients. The novel mutations identified in this study expand the genetic spectrum of late-onset Pompe disease, and the prevalence of respiratory dysfunction highlights the importance of monitoring pulmonary function in late-onset Pompe patients.

Competing interests

The authors declare that they have no competing interests.

Authors' contributions

XL carried out the molecular genetic studies, participated in the sequence alignment and drafted the manuscript, as well as ZW. WJ carried out the patients' history taking and data analysis. HL participated in the sequence alignment. WZ participated in the history taking. CQ carried out the respiratory function examination of the patients. YH participated in the GAA activity assay. YY conceived of the study, and participated in its design and coordination. All authors read and approved the final manuscript.

Acknowledgements

This study was supported by the Ministry of Science and Technology of China (No.2011ZX09307-001-07) and a research grant from Genzyme, A Sanofi Company in Pompe Registry.

Author details

¹Department of Neurology, Peking University First Hospital, Beijing 100034, China. ²Respiratory Department of Internal Medicine, Peking University First Hospital, Beijing 100034, China. ³Department of Medical Genetics, School of Basic Medical Sciences, Peking University Health Science Center, Beijing 100191, China.

Received: 12 April 2014 Accepted: 11 December 2014

Published online: 20 December 2014

References

- Fuller DD, ElMallah MK, Smith BK, Corti M, Lawson LA, Falk DJ, Byrne BJ: **The respiratory neuromuscular system in Pompe disease.** *Respir Respir Physiol Neurobiol* 2013, **189**:241–249.
- Ansong AK, Li JS, Nozik-Grayck E, Ing R, Kravitz RM, Idriss SF, Kanter RJ, Rice H, Chen YT, Kishnani PS: **Electrocardiographic response to enzyme replacement therapy for Pompe disease.** *Genet Med* 2006, **8**:297–301.
- Müller-Felber W, Horvath R, Gempel K, Podskarbi T, Shin Y, Pongratz D, Walter MC, Baethmann M, Schlotter-Weigel B, Lochmüller H, Schoser B: **Late onset Pompe disease: clinical and neurophysiological spectrum of 38 patients including long-term follow-up in 18 patients.** *Neuromuscul Disord* 2007, **17**:698–706.
- Laforêt P, Nicolino M, Eymard PB, Puech JP, Caillaud C, Poenaru L, Fardeau M: **Juvenile and adult-onset acid maltase deficiency in France: genotype-phenotype correlation.** *Neurology* 2000, **55**:1122–1128.
- Kroos M, Hoogveen-Westerveld M, van der Ploeg A, Reuser AJ: **The genotype-phenotype correlation in Pompe disease.** *Am J Med Genet C: Semin Med Genet* 2012, **160C**:59–68.
- Raben N, Plotz P, Byrne BJ: **Acid alpha-glucosidase deficiency (glycogenosis type II, Pompe disease).** *Curr Mol Med* 2002, **2**:145–166.
- Kroos MA, Van der Kraan M, Van Diggelen OP, Kleijer WJ, Reuser AJ, Van den Boogaard MJ, Ausems MG, van Amstel HK P, Poenaru L, Nicolino M: **Glycogen storage disease type II: frequency of three common mutant alleles and their associated clinical phenotypes studied in 121 patients.** *J Med Genet* 1995, **32**:836–837.
- Montalvo AL, Bembì B, Donnarumma M, Filocamo M, Parenti G, Rossi M, Merlini L, Buratti E, De Filippi P, Dardis A, Stroppiano M, Ciana G, Pittis MG: **Mutation profile of the GAA gene in 40 Italian patients with late onset glycogen storage disease type II.** *Hum Mutat* 2006, **27**:999–1006.
- Gort L, Coll MJ, Chabás A: **Glycogen storage disease type II in Spanish patients: high frequency of c.1076-1GC mutation.** *Mol Genet Metab* 2007, **92**:183–187.
- Joshi PR, Gläser D, Schmidt S, Vorgerd M, Winterholler M, Eger K, Zierz S, Deschauer M: **Molecular diagnosis of German patients with late-onset glycogen storage disease type II.** *J Inher Metab Dis* 2008, **31**(Suppl 2):261–265.
- Huie ML, Chen AS, Tsujino S, Shanske S, DiMauro S, Engel AG, Hirschhorn R: **Aberrant splicing in adult onset glycogen storage disease type II (GSDII): molecular identification of an IVS1 (-13T->G) mutation in a majority of patients and a novel IVS10 (+1GT->CT) mutation.** *Hum Mol Genet* 1994, **3**:2231–2236.
- Yang CC, Chien YH, Lee NC, Chiang SC, Lin SP, Kuo YT, Chen SS, Jong YJ, Hwu WL: **Rapid progressive course of later-onset Pompe disease in Chinese patients.** *Mol Genet Metab* 2011, **104**:284–288.
- Wens SC, van Gelder CM, Kruijshaar ME, de Vries JM, van der Beek NA, Reuser AJ, van Doorn PA, van der Ploeg AT, Brusse E: **Phenotypical variation within 22 families with Pompe disease.** *Orphanet J Rare Dis* 2013, **8**:182.
- Hanisch F, Rahne T, Plontke SK: **Prevalence of hearing loss in patients with late-onset Pompe disease: Audiological and otological consequences.** *Int J Audiol* 2013, **52**:816–823.
- Remiche G, Ronchi D, Magri F, Lamperti C, Bordoni A, Moggio M, Bresolin N, Comi GP: **Extended phenotype description and new molecular findings in late onset glycogen storage disease type II: a northern Italy population study and review of the literature.** *J Neurol* 2014, **261**:83–97.
- Liu Q, Zhao J, Wang ZX, Zhang W, Yuan Y: **Clinical features and acid alpha-glucosidase gene mutation in 7 Chinese patients with glycogen storage disease type II.** *Zhonghua Yi Xue Za Zhi* 2013, **93**:1981–1985. Chinese.
- Jin W, Que C, Tang H, Huang Y, Wang Z, Liu X, Lv H, Zhang W, Yuan Y: **Clinical study of respiratory function in patients with late-onset glycogen storage disease type II.** *Chinese J Contemp Neurol Neurosurg* 2014, **14**:399–404. Chinese.
- Yang J, Cao J, Liu Z, Zhan Y, Liang Y, Mo G, Li Y, Sun Y, Li M, Li J, Zhang C: **Clinical features and genetic analysis of 7 patients with late-onset glycogen storage disease type II.** *Chinese J Contemp Neurol Neurosurg* 2014, **14**:405–410. Chinese.
- Kallwass H, Carr C, Gerrein J, Titlow M, Pomponio R, Bali D, Dai J, Kishnani P, Skrinar A, Corzo D, Keutzer J: **Rapid diagnosis of late-onset Pompe disease by fluorometric assay of alpha-glucosidase activities in dried blood spots.** *Mol Genet Metab* 2007, **90**:449–452.
- Park HD, Lee DH, Choi TY, Lee YK, Lee SY, Kim JW, Ki CS, Lee YW: **Three patients with glycogen storage disease type II and the mutational spectrum of GAA in Korean patients.** *Ann Clin Lab Sci* 2013, **43**:311–316.
- Loureiro Neves F, Garcia PC, Madureira N, Araújo H, Rodrigues F, Estêvão MH, Lacerda L, Diogo Matos LM: **Juvenile pompe disease: retrospective clinical study.** *Acta Med Port* 2013, **26**:361–370.
- Oda E, Tanaka T, Migita O, Kosuga M, Fukushi M, Okumiya T, Osawa M, Okuyama T: **Newborn screening for Pompe disease in Japan.** *Mol Genet Metab* 2011, **104**:560–565.
- Becker JA, Vlach J, Raben N, Nagaraju K, Adams EM, Hermans MM, Reuser AJ, Brooks SS, Tift CJ, Hirschhorn R, Huie ML, Nicolino M, Plotz PH: **The African origin of the common mutation in African American patients with glycogen-storage disease type II.** *Am J Hum Genet* 1998, **62**:991–994.
- Fu L, Qiu W, Yu Y, Guo Y, Zhao P, Zhang X, Liu C, Li F, Huang H, Huang M, Chen S: **Clinical and molecular genetic study of infantile-onset Pompe**

- disease in Chinese patients: identification of 6 novel mutations. *Gene* 2014, **535**:53–59.
25. Herzog A, Hartung R, Reuser AJ, Hermanns P, Runz H, Karabul N, Gökçe S, Pohlenz J, Kampmann C, Lampe C, Beck M, Mengel E: **A cross-sectional single-centre study on the spectrum of Pompe disease, German patients: molecular analysis of the GAA gene, manifestation and genotype-phenotype correlations.** *Orphanet J Rare Dis* 2012, **7**:35.
 26. Gaeta M, Barca E, Ruggeri P, Minutoli F, Rodolico C, Mazziotti S, Milardi D, Musumeci O, Toscano A: **Late-onset Pompe disease (LOPD): correlations between respiratory muscles CT and MRI features and pulmonary function.** *Mol Genet Metab* 2013, **110**:290–296.
 27. Schneider I, Hanisch F, Müller T, Schmidt B, Zierz S: **Respiratory function in late-onset Pompe disease patients receiving long-term enzyme replacement therapy for more than 48 months.** *Wien Med Wochenschr* 2013, **163**:40–44.
 28. Preisler N, Lukacs Z, Vinge L, Madsen KL, Husu E, Hansen RS, Duno M, Andersen H, Laub M, Vissing J: **Late-onset Pompe disease is prevalent in unclassified limb-girdle muscular dystrophies.** *Mol Genet Metab* 2013, **110**:287–289.
 29. Vissing J, Lukacs Z, Straub V: **Diagnosis of Pompe disease: muscle biopsy vs blood-based assays.** *JAMA Neurol* 2013, **70**:923–927.
 30. Kishnani PS, Amartino HM, Lindberg C, Miller TM, Wilson A, Keutzer J: **Methods of diagnosis of patients with Pompe disease: Data from the Pompe Registry.** *Mol Genet Metab* 2014, **113**:84–91.

Submit your next manuscript to BioMed Central and take full advantage of:

- Convenient online submission
- Thorough peer review
- No space constraints or color figure charges
- Immediate publication on acceptance
- Inclusion in PubMed, CAS, Scopus and Google Scholar
- Research which is freely available for redistribution

Submit your manuscript at
www.biomedcentral.com/submit

